



ControllerView®

Enterprise-wide Solution for Regulatory Reporting and Financial Control

ControllerView® provides:

Regulatory reporting to central banks and other statutory authorities worldwide.

Head office and Entity reporting.

Basel II-III, PF Regulations and Solvency II, CRD4 compliance.

IAS/IFRS, GAAP and other accounting standards compliance, based on the Visual Business Rules of the Data Aggregation Engine.

Flexible interface with GL systems, Multiple chart of accounts support, GL Extensions.

EMIR, Dodd-Frank Act compliance.

Manual data entry and data adjustment capability.

Operations Reporting including Reconciliation and Variance reports

Electronic Report Submission and XBRL capability

ControllerView® is a strategic financial control platform designed to deal with the challenges facing today's financial executives, while delivering solutions for Regulatory, Operational and Management Reporting. It enables greater transparency across the entire enterprise by rapidly adapting to new regulatory regimes.

ControllerView® empowers its users with complete control in establishing and maintaining reporting logic to any degree of complexity. Users can fulfill regional or global reporting requirements or utilize the tool to structure data accommodating the specific needs of their organization.

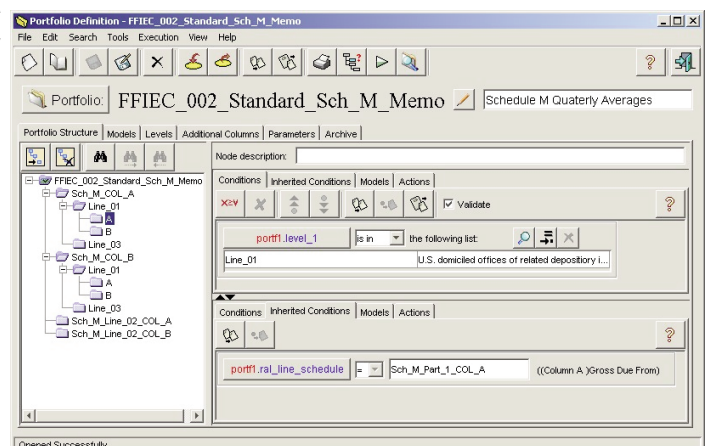
AxiomSL provides global coverage of reporting templates and timely update services for regulatory jurisdictions around the world. These include the FRB, SEC, BOE, FSA and RBI, all in compliance with local requirements and accounting standards.

Users have the ability to individually define mapping logic to meet reporting and accounting requirements by utilizing AxiomSL's proprietary Visual Business Rules™ (VBR) for data distribution and aggregation. No programming knowledge is required to perform the VBR functions that are designed to allow business users to use VBR™ based on their subject matter expertise. The terminology defined by VBR™ automatically translates into a series of complex query statements. The system then applies defined VBR sets to data sources residing within the data repository or available for access externally.

The reports generated by ControllerView® are accessible on-screen with the client interface, allowing in-depth analysis and manual adjustments as necessary. Reports can be submitted electronically using the latest methods prescribed by the Regulators (such as XBRL). Reports can be produced intra-day, daily, weekly, monthly, quarterly, annually or at any other interval to meet internal reporting requirements.

ControllerView® provides comprehensive views of financial information on entity and consolidated levels. With VBR™ definition capability, major extensions to existing systems become possible, i.e. generation of Sub-ledgers and other functional extensions to the General Ledger, and Flexible Charts of Accounts re-definition.

ControllerView® is supported by AxiomSL's Integration Center® and Dynamic Data Warehouse™. These systems gather, consolidate and historically store heterogeneous data from all back-office and front-office processing systems, legacy data sources, and external data feeds.



Visual Business Rules Definition

The flexibility of Controller View® makes it easy to adjust to specifications that may vary from institution to institution, or between different geographies and languages within the organization. This flexibility also extends to incorporating changes in compliance requirements without lengthy systems re-engineering projects, thus drastically decreasing the implementation time.

ControllerView® enables the business user the ability to analyze each report in an on-screen format line by line, breaking down the figures by either ad hoc or pre-defined parameters.

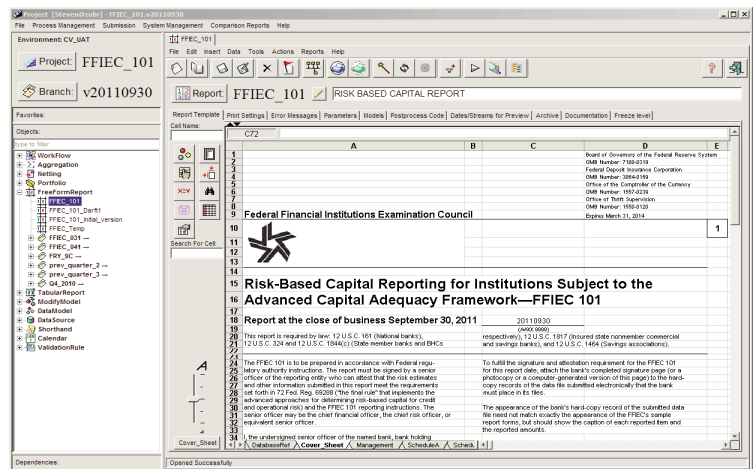
The data may be reconfigured with the push of a button to view detail by any defined grouping, such as Branch, General Ledger, Customer Type, Nationality, Counterparty, Trader and more. An unlimited detailing capacity allows you to see your data on the transaction, trade, or position level at any point of the analysis.

ControllerView's unique functionality also offers transaction level disaggregation, allowing the user to drill-down into the data to the lowest level of granularity.

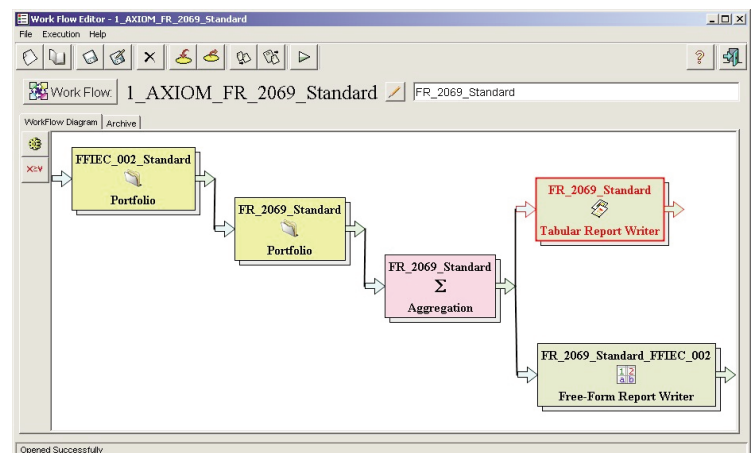
Reports are produced within minutes and satisfy many reporting requirements that previously took weeks to compile. This rapid rate of report generation gives analysts sufficient time to review the results and, in the event of an error, take necessary action, thereby ensuring the accuracy of submitted reports.

Other important features and functions of the system include:

- SAP, PeopleSoft, Oracle Financials and other GL and accounting systems support
- Balance and Transaction Adjustment module: for correcting miscoded transactions or accounts, and manual data entry capability.
- Netting Management: provides the ability to define both simple and complex netting rules and reserves.
- Business Day Accounting: allows you to define business days according to the local requirements.
- Full Multi-currency and Home Currency Conversions.
- Drill down capability provides an instant tool for detailed analysis of results as well as instant verification of reported summary numbers down to the individual transaction or account.
- Extensive Audit Trails.
- Reconciliation: complete reconciliation capabilities from the data generated by the report back to your source data
- Variance Analysis: provides the user the ability to compare reports and individual cells on the report from one period to another, i.e. Q1 vs. Q2, for variances based on your parameters.
- Extensive Audit Trails.
- Reconciliation: complete reconciliation capabilities from the data generated by the report back to your source data
- Variance Analysis: provides the user the ability to compare reports and individual cells on the report from one period to another, i.e. Q1 vs. Q2, for variances based on your parameters.



Electronic Report Submission



Process Workflow

ControllerView® operates on virtually any platform including Unix, Linux and Windows with most of commercial data bases. ■